

Reichert Capture Bidirectional Integration Guide

Available on CrystalPM versions 4.5.4+


Useful Links:

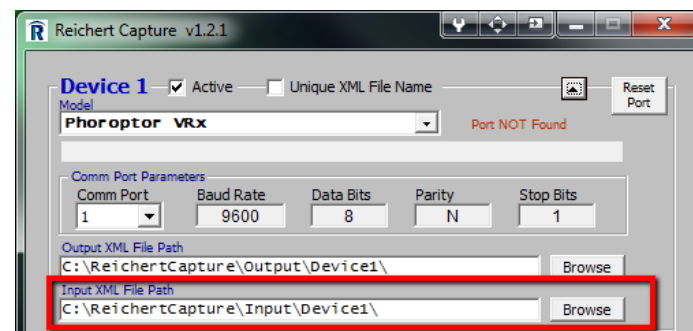
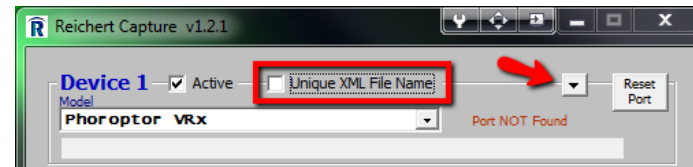
Reichert Capture software can be found: [here](#).

The user manual for the Phoroport VRx can be found [here](#).

The user manual for the Visutron 900 can be found [here](#).

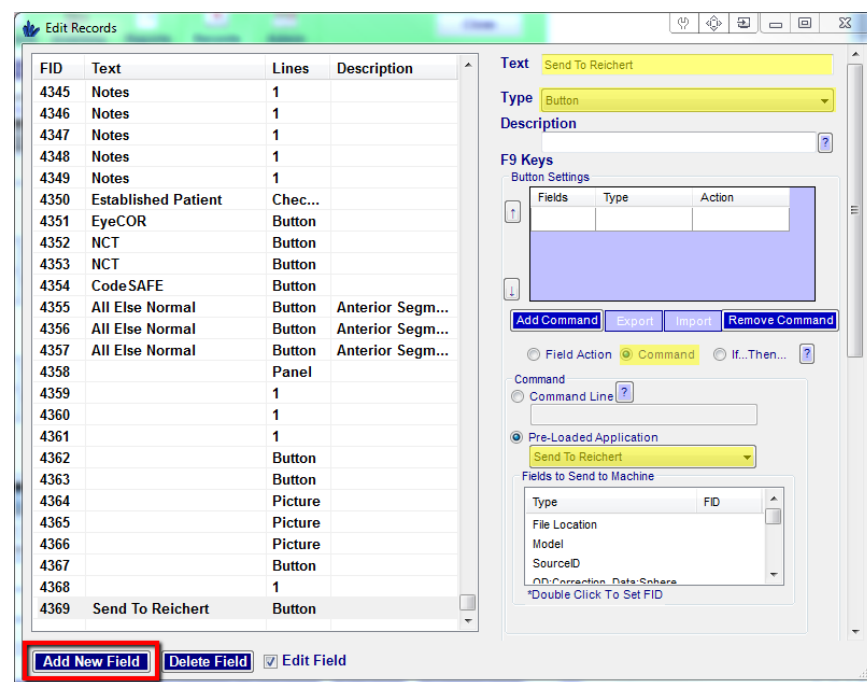
REICHERT CAPTURE SETTINGS

1. Open Reichert Capture and configure the Phoroport
2. Make sure Unique XML File Name is unchecked
3. Click on  to configure the input file path
4. The pathway may already be configured, but if not:
 - a. Click on Browse next to Input XML File Path
 - b. Browse to: C:\ReichertCapture\Input\Device1\
5. At the bottom of the Reichert Capture window click on Save



SEND TO REICHERT BUTTON

1. In the Edit Records Window, click on Add New Field at the bottom left of the window.
2. Change the Text to “Send To Reichert”
3. Make the Type Button
4. Choose Command → Pre-Loaded Application → Send To Reichert



5. Fields to Send to Machine:

- a. **File Location:** Location of the Reichert Capture Input folder\InputData.xml*
Typical Location: *C:\ReichertCapture\Input\Device1\InputData.xml*
 *InputData.xml or ReichertData.xml must be added to the end of the file location

- b. **Model:** Specific Model of Instrument
 - i. PhoroptorVRx
 - ii. AutoPhorRs
 - iii. Visutron900

- c. **SourceID** Source of Data*
 - i. For Autorefracton data use: AR
 - ii. For Lensometer data use: LM

***To send both AR and LM data to the Reichert, you will need to create two separate buttons.**

- d. Assign the rest of the fields to their corresponding Field ID's in the record template

6. ****Scroll down on to the bottom of the window and click SAVE****

