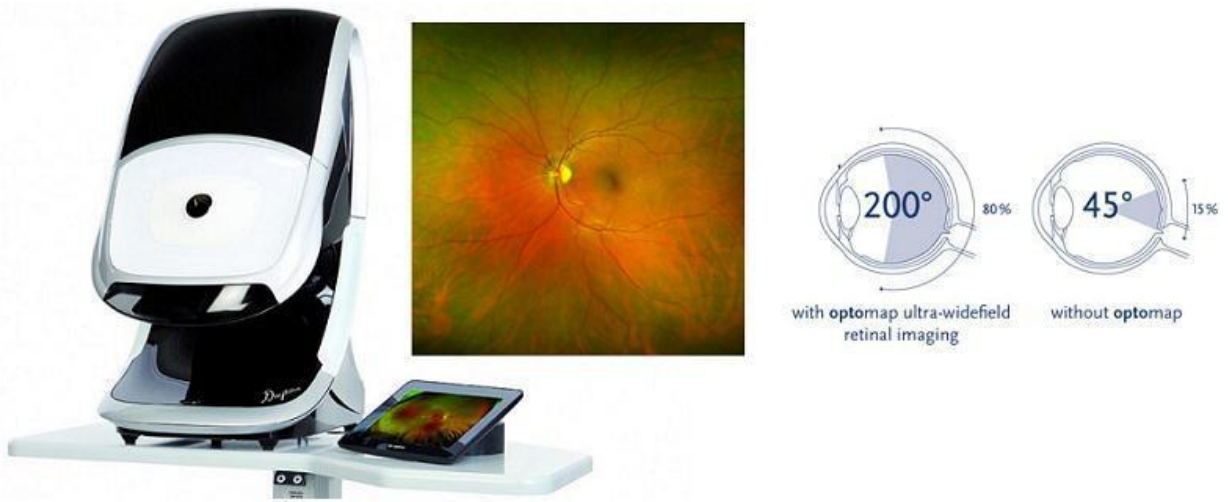


# **optomap**<sup>®</sup> ultra-widefield retinal imaging



Premier Eye Centers perform the Optomap Retinal Imaging as advanced scanning technology as part of your routine exam.

**The \$69 copay is incorporated into today's fees dispensed.**



Optomap can detect diseases such as diabetes, high blood pressure, cholesterol and more. Without this testing or drops, the doctor is unable to see into the eye and evaluate ocular health.



Optomap Retinal Imaging allows the doctor to see 200 degrees inside the eye without drops, blurry vision, and takes less than 1 minute to complete. Safe and approved for children, adults, pregnant mothers, and elderly.

\_\_ By electronically signing this form you acknowledge you are aware of copays and testing performed \_\_