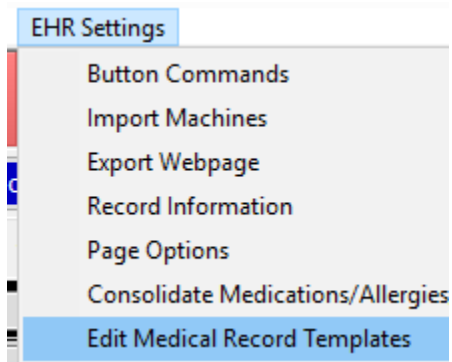


Creating new contact lens shortcut buttons

The easiest way to add new CL shortcut buttons is to copy an existing one and modify it.

Enter the Records of a test patient and enter edit mode:



Go to the CLS Buttons tab

Click on a button to highlight it.

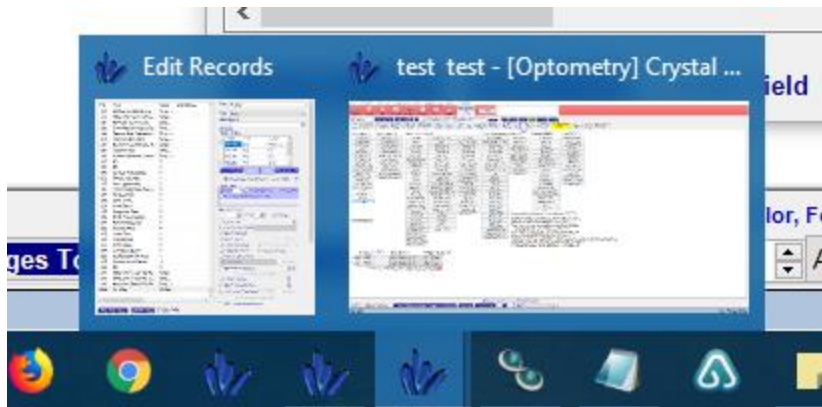
Right click in an empty area and choose Copy Fields.

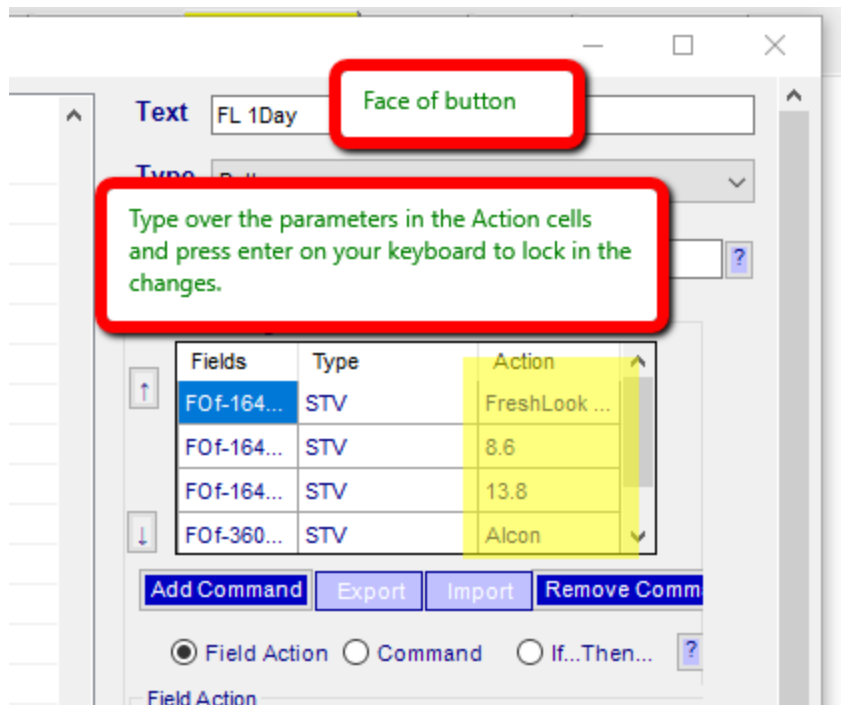
Right click in an empty area again and choose Paste Fields (Create New).

This will create a new button that you can easily modify.

In the Edit Records window, the new button will be at the very bottom of the list for you to modify.

***If you don't see the Edit Records window, it was either closed or minimized and will be at the bottom of your screen:*





Once you are done modifying the name of the button and the parameters, you can click on the new button and drag it to wherever you would like.

Add as many new buttons as needed, Stop Editing and Save Changes to Database when you are finished.

To delete an existing button, click on it and press delete on your keyboard.

***The face of the button won't update until you save changes.*

**If you don't see your changes after saving, you may need to start a new record.*

Make sure you are in the Records section of the test patient. Go to EHR Settings->Record Information->Delete Medical Record->Click Yes. The screen will turn white indicating the record is deleted. Click on Records and choose your test patient. You will be on the updated template