

ACEP SMART MIRROR INTEGRATION GUIDE

Available in version in 5.6.16 and up

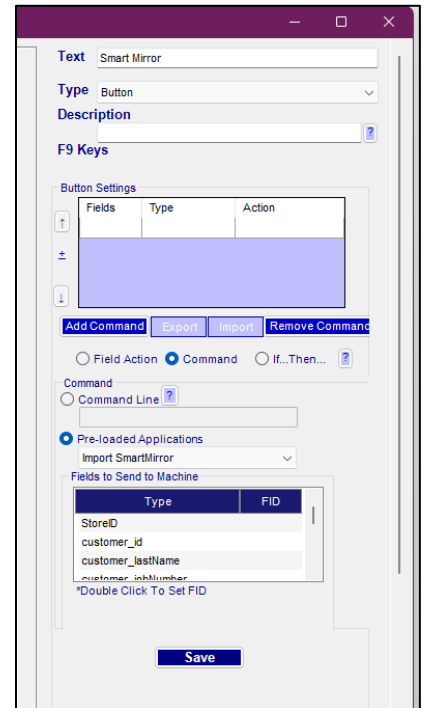


ABOUT

- Crystal's Smart Mirror integration will link the Smart Mirror App based off the store ID.
- Log into Dataweb.opticvideo.com to create ECP (Must be signed in to link with Crystal PM)
- Crystal PM has a Pre-made tab for the records for integration.

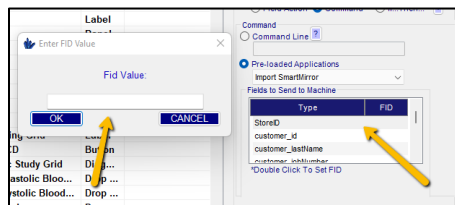
SMART MIRROR BUTTON

1. In **Records**, click on **EHR Settings -> Edit Medical Record Templates**
2. In the Edit Records Window, click on **Add New Field** at the **bottom left** of the window.
 - a. **Text** = Smart Mirror
 - b. **Type** = Button
 - c. Select the **Command** radio button
 - d. Select **Pre-loaded Applications** and choose Import Smart Mirror
 - e. Under Fields to Send to Machine enter Store ID
 - i. *Store ID can be found in the setting in the iPad in Smart Mirror Mobile App.*
 - f. Double click line to enter FID (Note: not all import fields are required)



g. Required fields are as follows:

- Far PD Right
- Far PD Left
- Far Fitting Height Right
- Far Fitting Height Left
- Near PD Right
- Near PD Left
- Reading Distance
- Frame A
- Frame B
- Frame DBL
- Position of Wear – Panto Tilt and Vertex
- Far Photo/Screen Shot (with Pic Box)



h. When finished adding all relevant FIDs, click **Save**

3. Right-Click on the Template page you would like to add the button to and click **Add Field to Tab**

SMART MIRROR IMPORT

1. Click your Smart Mirror button
2. Another window will open for you to select a patient the click load data.

